

Relish

IN ROOM DINING MENU

Relish

Breakfast



BREAKFAST

MAINS

Eggs your way (V) - 24

Soft poached, scrambled or boiled, artisan sourdough toast, local smashed avocado, roasted tomato

Breakie Roll - 19

Fried eggs, bacon, hash brown, tasty cheddar, brioche bun, chipotle aioli

Large Breakfast - 29

Scrambled, fried or poached eggs, black forest bacon, chipolatas, sautéed mushrooms, baby spinach, tomato, hash brown & toast

Omelette (GF) - 21

3 egg omelette, choice of cheese, ham, chilli, onion, capsicum, mushroom & baby spinach

Smashed Avo - 19

Beetroot feta, sourdough, dukkah, tomato relish

Pancakes - 19

Canadian inspired roasted black forest bacon with maple syrup

SIDES

Hash brown - 5, Sautéed Mushroom & Spinach - 6,

Bacon - 6, Sausages - 6, Smashed Avocado - 6,

Baked Beans - 5, Toast - 4

Wholemeal, white, multi grain or Sourdough

15% Public Holiday Surcharge will apply to all menu items



Opening times: 6:30am - 10:30am



[crowneplazasurfersparadise](https://www.crowneplazasurfersparadise.com)


CROWNE PLAZA
AN IHG HOTEL
SURFERS PARADISE

Relish

All Day

ALL DAY

CLASSICS

Crowne Plaza Loaded Burger - 24

1/4 pounder beef patty, crispy bacon, fried egg, fried onion rings, lettuce, tomato, cheese, beetroot, dill pickle on brioche bun

Crowne Plaza Vege Burger (VG) - 24

Vege patty, fried egg, fried onion rings, lettuce, tomato, cheese, beetroot, dill pickle on brioche bun

Crowne Plaza Classic Club Sandwich - 22

3 slices of sourdough, chicken breast, bacon, egg, lettuce, tomato, fruit chutney, kewpie mayo

Buttermilk Chicken Nibbles - 24

Pickled veg, rustic fries & house made sauce of your choice:
Bourbon BBQ, Buffalo Hot Sauce, Korean Sweet Chilli

LIGHT BITES

Fries - 10

Truffle aioli

Cajun Sweet Potato Chips - 12

Chipotle Aioli

House Made Salt & Pepper Squid - 18

Sriarcha Aioli, spring onion

Karaage Chicken - 18

Kewpie remoulade

Soup Of The Day - 12

Sourdough bread

15% Public Holiday Surcharge will apply to all menu items



Opening times: 10:30am - 9:30pm



[crowneplazasurfersparadise](https://www.crowneplazasurfersparadise.com)


CROWNE PLAZA
AN IHG HOTEL
SURFERS PARADISE

Relish

All Day



FROM THE CHAR GRILL

4 Week Aged Striploin - 39

300gm grass fed beef served with choice of rustic fries or Paris mash & seasonal veg

Angus Rump - 32

200gm grass fed angus beef served with choice of rustic fries & salad or Paris mash & seasonal veg

Chicken Maryland - 27

Grilled Maryland chicken served with choice of rustic fries & salad or Paris mash & seasonal veg

Grilled Barramundi - 34

Roasted potato, seasonal green veg, lemon citrus sauce

Choice of Sauces - 2

Madagascar Black Pepper, Creamy Shiitake Mushroom, Chimichurri, Béarnaise, Horseradish Relish

LARGE BITES

Salmon Donburi - 29

200gm Salmon fillet with miso glaze, gohan rice, edamame, sliced avocado, pickled ginger, wakame, crispy shallots, toasted sesame, wasabi dressing

Fish of the day - 29

Light tempura beer batter, rustic fries, salad, lemon wedge, malt vinegar aioli

Lamb Shank Moussaka - 29

Stack of pulled lamb shank, with crisp potatoes, braised tomato sauce & baked eggplant with Moroccan Spices & gremolata

ALL DAY

15% Public Holiday Surcharge will apply to all menu items



Opening times: 10:30am - 9:30pm



[crowneplazasurfersparadise](https://www.instagram.com/crowneplazasurfersparadise)


CROWNE PLAZA
AN IHG HOTEL
SURFERS PARADISE

Relish

All Day

ALL DAY

PIZZA

GF Base
available - 3

Margherita (VG) - 22

Heirloom tomatoes, basil leaves, bocconcini

BBQ meat Lovers - 26

Pulled chicken, pepperoni, sliced ham, ground beef, BBQ sauce

Trawler's Catch - 29

QLD Marinara mix, blistered red capsicum, capers, heirloom tomato and lemon wedge

DESSERT

Trio of Ice Cream - 12

Fresh berries accompanied with a variety of flavours

Queensland Fruit Cocktail (VG) - 15

Seasonal fruit served with chantilly cream & lemongrass glaze

Panna Cotta - 18

Mixed berry coulis & chantilly cream

Baked Cheese Cake - 18

Mixed berry coulis, chantilly cream & biscoff soil

Chocolate Raspberry Dome - 22

Raspberry compote centre, chantilly cream & almond florentine crackling

15% Public Holiday Surcharge will apply to all menu items



Opening times: 10:30am - 9:30pm



[crowneplazasurfersparadise](https://www.instagram.com/crowneplazasurfersparadise)


CROWNE PLAZA
AN IHG HOTEL
SURFERS PARADISE

Relish

KIDS



SMALL STUFF
12 years & under

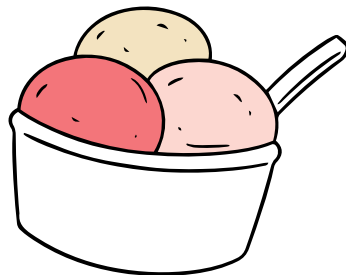
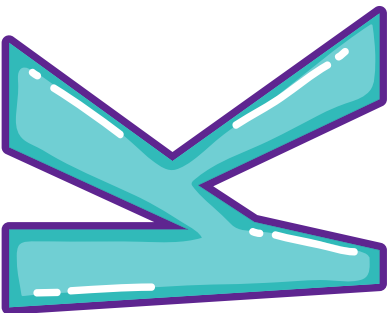
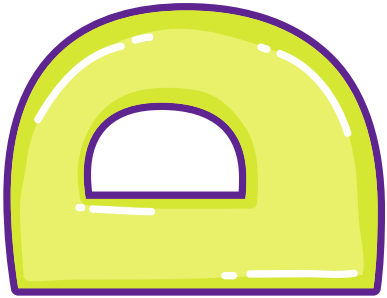
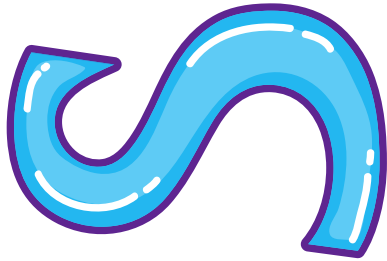
Chicken Nuggets & Chips - 15

Pasta Primavera (V) - 15
Napoli Sauce

Fish & Chips - 15

Hawaiian Pizza - 15

All kids meals include a choice of juice or soft drinks & Icecream



15% Public Holiday Surcharge will apply to all menu items



Relish



CROWNE PLAZA
AN IHG HOTEL
SURFERS PARADISE

Relish

Wines



DRINKS

SPARKLING

Dunes & Greene Prosecco - 11/52

South Australia

Chandon Brut - 13/60

Adelaide Hills, SA

De Beaurepaire Annabelle Rose - 65

Rylestone, NSW

Moet & Chandon Imperial - 129

Champagne, France

MOSCATO

Yalumba Christobel's - 11/55

South Australia

RIESLING

Jim Barry Atherley - 12/50

Claire Valley, South Australia

SAUVIGNON

Wirra Wirra - 12/55

Adelaide Hills, South Australia

BLANC

HaHa - 13/60

Marlborough, New Zealand

Catalina Sounds - 65

Marlborough, New Zealand

PINOT GRIS / GRIGIO

Ta_Ku - 11/50

New Zealand

De Beaurepaire Patte - 12/55

Rylstone, New South Wales

CHARDONNAY

Pitchfork - 11/55

Margaret River, Western Australia

Yalumba "Samuels Collection" - 13/60

Eden Valley, South Australia

ROSE

Hesketh Wild At Heart - 11/50

Limestone Coast, South Australia

La Vielle Ferme - 13/60

Rhone Valley, France



Opening times: 10am - 10:30pm



[crowneplazasurfersparadise](https://www.instagram.com/crowneplazasurfersparadise)



CROWNE PLAZA
Surfers Paradise

Relish

Wines



DRINKS

PINOT NOIR

Ta_Ku - 11/48

Marlborough, New Zealand

Storm Bay - 13/60

Coal River Valley, Tasmania

MERLOT

Grant Burge Hillcot - 12/55

Barossa Valley, South Australia

SHIRAZ

Earthworks - 11/50

Barossa Valley, South Australia

Oliver Taranga - 13/60

McLaren Vale, South Australia

CABERNET SAUVIGNON

Sisters Run Old Testament - 11/50

Coonawarra, South Australia

De Beaurepaire Aviatrix - 60

Rylstone, New South Wales

RED VARIETALS & BLENDS

Whistler Shock Value SMG - 56

Barossa Valley, South Australia

De Beaurepaire Claude Petit Verdot - 60

Rylstone, New South Wales

FORTIFIED 60ML

Penfolds Club Reserve Tawny Port - 9

Barossa valley, South Australia

Galway Pipe Tawny Port - 10

Barossa valley, South Australia

Penfolds Granfather Tawny Port - 15

Barossa valley, South Australia



Opening times: 10am - 10:30pm



[crowneplazasurfersparadise](https://www.crowneplazasurfersparadise.com)



CROWNE PLAZA
Surfers Paradise

Relish

Spirits



DRINKS

VODKA

SMIRNOFF - 11

International

MANLY SPIRITS - 12

Manly, Australia

BELVEDERE - 14

Poland

GIN

GORDON'S - 12

England

MANLY SPIRITS LILLY PILLY PINK - 12

Manly, Australia

MANLY SPIRITS COASTAL CITRUS - 12

Manly, Australia

INK GIN HUSK DISTILLERY - 13

Tumbulgum, Australia

BOMBAY SAPPHIRE - 14

England

TEQUILA

JOSE CUERVO - 11

Mexico

PATRON SILVER - 14

Mexico



Opening times: 10am - 10:30pm



[crowneplazasurfersparadise](https://www.instagram.com/crowneplazasurfersparadise)



CROWNE PLAZA
Surfers Paradise

Relish

Spirits



DRINKS

RUM

BUNDABERG UP - 11

Queensland, Australia

BACARDI SUPERIOR - 11

Puerto Rico

KRAKEN SPICED - 12

Trinidad & Tobago

HUSK DISTILLERY BAM BAM - 13

Tumbulgum, Australia

BRANDY & COGNAC

HENNESSY VS - 12

France

MARTELL VSOP - 14

France

SINGLE MALT SCOTCH WHISKEY

TALISKER 10 YEAR OLD - 12

Scotland

BENRIACH 10 YEARS OLD - 14

Highlands

GLENFIDDICH 12 YEARS OLD - 15

Speyside

LAPHROAIG 10 YEARS OLD - 15

Islay

INTERNATIONAL & BLENDED WHISKY

JOHNNIE WALKER RED - 11

Scotland

CHIVAS REGAL 12 YEAR OLD - 12

Scotland

JAMESON - 11

Ireland

CANADIAN CLUB - 11

Canada

JOHNNIE WALKER BLACK - 13

Scotland

JOHNNIE WALKER BLUE LABEL - 28

Scotland



Opening times: 10am -10:30pm



[crowneplazasurfersparadise](https://www.instagram.com/crowneplazasurfersparadise)



CROWNE PLAZA
Surfers Paradise

Relish

Spirits



AMERICAN WHISKEY

JIM BEAM - 11

United States

SOUTHERN COMFORT - 11

United States

WILD TURKEY - 11

United States

JACK DANIEL'S - 11

United States

MAKER'S MARK - 12

United States

LIQUERS

BAILEYS - 11

Ireland

KAHLUA - 11

Mexico

ALIZE - 11

France

MALIBU - 11

Barbados

COINTREAU - 11

France

CHAMBORD - 11

France

AMERETTO - 11

Italy

GALLIANO VANILLA - 11

Italy

GALLIANO SAMBUCCA BLACK - 11

Italy

GALLIANO SAMBUCA - 11

Italy

MANLY SPIRITS LIMONCELLO - 13

Australia

DRINKS



Opening times: 10am -10:30pm



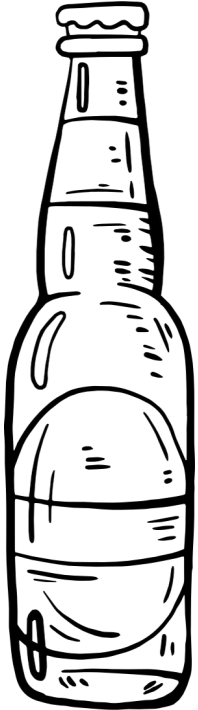
[crowneplazasurfersparadise](https://www.crowneplazasurfersparadise.com)



CROWNE PLAZA
Surfers Paradise

Relish

Beer, Ciders & Seltzers



DRINKS

LOCAL BEER

- HAHN LIGHT - 7
- XXXX GOLD - 9
- GREAT NORTHERN SUPER CRISP - 9
- GREAT NORTHERN ORIGINAL - 10
- JAMES BOAGS PREMIUM - 10
- JAMES SQUIRE 150 LASHES - 9.5
- BALTER XPA - 11

INTERNATIONAL BEER

- HEINEKEN ZERO ALCOHOL - 8
- CORONA - 11
- PERONI NASTRO AZZURRO - 11
- ASAHI SUPER DRY - 12

DRAUGHT

SCHOONER

- GREAT NORTHERN SUPER CRISP - 9
- BALTER XPA - 11

PINT

- GREAT NORTHERN SUPER CRISP - 12
- BALTER XPA - 15

CIDER, SELTZER & GINGER BEER

- 5 SEEDS CRISP APPLE CIDER - 11
- BROOKEVALE UNION GINGER BEER - 12
- BROOKEVALE UNION LEMON LIME & BITTERS - 12
- SOLO HARD RATED - 12



Opening times: 10am - 10:30pm



[crowneplazasurfersparadise](https://www.instagram.com/crowneplazasurfersparadise)



CROWNE PLAZA
Surfers Paradise

Relish

Non-alcoholic



COFFEE

Flat White, Latte, Cappuccino, Piccolo, Mocha
Macchiato, Short Black, Long Black, Americano,
Hot Chocolate

Small - 5.5

Large - 6

Extra Shot - 0.5

Iced Coffee - 7

Iced Chocolate - 7

Specialty Milks - 0.7

Soy, Lactose Free, Almond, Oat

TEA

English Breakfast, Earl Grey, Green tea

Peppermint, Chamomile, Lemon & Ginger - 4.5

SOFT DRINKS & JUICE

Glass - 5

Pepsi, Pepsi Max, Solo, Lemonade, Ginger Ale, Tonic Water

Can - 6

Pepsi, Pepsi Max, Solo, Lemonade, Ginger Ale, Tonic Water, Ginger
Beer

Assorted Juices - 5

Orange, Apple, Pineapple, Cranberry

MILKSHAKES

Vanilla, Chocolate, Caramel, Strawberry - 10

DRINKS



Opening times: 10am -10:30pm



[crowneplazasurfersparadise](#)



CROWNE PLAZA
Surfers Paradise